



RUBBER PARTS CATALOG®.com

PLATFORM MOUNTS

VIBRATION, SHOCK & MOTION CONTROL

SOLUTIONS - FOR A WORLD IN MOTION

We offer standardized products to meet most applications. Some control problems, however, require specialized solutions such as a custom-designed mount or a combination of LORD products. Our experts in vibration and noise control can analyze your individual requirements and provide you the most effective and affordable solution ... Ask Us How.

SURFACE EFFECT MOUNTS



Surface-Effect Mounts combine surface-effect damping principles with traditional rubber-bonded-to-metal technology. The result is a soft mount capable of providing effective damping over large deflections and a wide range of frequencies. As cab and engine mounts in on- and off-highway vehicles, Surface-Effect Mounts meet the most demanding requirements for vibration isolation and noise attenuation while controlling motion.

Compression Load Range: 3,115 - 6,987 N (700 - 1,570 lbs)

CONICAL MOUNTS



LORD Conical Mounts provide effective vibration isolation and noise attenuation with a simple, robust mount design. Consistent performance, high load bearing capabilities and a choice of radial stiffness characteristics are key features of these mounts. For more demanding vibration and noise reduction requirements, LORD integrates Conical Mounts with surface-effect technology to form an advanced control solution known as Surface-Effect Systems.

Compression Load Range: 801 - 11,392 N (180 - 2,560 lbs)

SANDWICH MOUNTS - FLEX-BOLT™



Efficient power transmission and driveline component durability are among powertrains designers' most important concerns. Increased durability and up-time are two characteristics demanded by purchasers of today's complex and expensive machinery. These demands can only be met with reliable, trouble-free, smooth-running powertrains free from damaging loads that compromise component life.

Compression Load Range: 27 - 59,808 N (6 - 13,440 lbs)

Shear Load Range: 4.45 - 7,476 N (1 - 1,680 lbs)

CENTER-BONDED MOUNTS



LORD Center-Bonded Mounts isolate vibration, control shock and reduce noise due to structure borne vibrations. Available in a full range of rated load capacities and able to withstand shock loads of 10 g's, these mounts effectively protect equipment and improve operator comfort. They are ideal for automotive, marine, railroad and industrial markets.

Compression Load Range: 334 - 9,345 N (75 - 2,100 lbs)

TWO-PIECE MOUNTS



LORD Two-Piece Mounts are designed for applications involving severe dynamic forces in the static load direction, as well as the rebound direction. Travel is limited in both directions by rubber in compression that provides snubbing.

Compression Load Range: 178 - 15,352 N (40 - 3,450 lbs)

BINOCULAR/SPLIT MOUNTS



LORD Binocular/Split Mounts are designed for applications involving severe dynamic forces in the static load direction, as well as the rebound direction. Travel is limited in both directions by rubber in compression that provides snubbing.

Compression Load Range: 4,450 - 6,675 N (1,000 - 1,500 lbs)

PLATFORM MOUNTS



LORD Platform Mounts provide effective isolation against vibration. The contour of the flexing element was developed to provide uniform stress distribution. This, plus high strength bonding and the use of specially compounded elastomers, provides maximum service life.

Compression Load Range: 2 N - 2,225 N (0.5 - 500 lbs)

GROMMET ISOLATORS



LORD Grommet Isolators provide effective, economical vibration isolation for light loads. They are suitable for commercial and military applications including computers, disk drives, business machines, precision instrumentation and general industrial equipment.

Compression Load Range: 4 - 27 N (1 - 6 lbs)

MACHINERY MOUNTS



LORD Machinery Mounts are designed to support heavy equipment and isolate intermittent or continuous vibration. The result is greater machine accuracy, longer service life, smoother operation and reduced maintenance. These mounts are available in four types to suit different needs.

Compression Load Range: 223 - 33,375 N (50 - 7,500 lbs)

BUSHINGS



LORD Center-Bonded Bushings and Square-Bonded Bushings are used in applications where the absorption shock, attenuation of noise, reduction of wear and elimination of lubrication is required.

Compression Load Range: 890 - 41,385 N (200 - 9,300 lbs)



RUBBERPARTSCATALOG.COM

“High strength bonding and the use of specially compounded elastomers...”

Platform Mounts

Featuring: Platform Mounts
Heavy-Duty Platform Mounts
Multiplane Mounts

LORD Platform Mounts provide effective isolation against vibration. The contour of the flexing element was developed to provide uniform stress distribution. This, plus high strength bonding and the use of specially compounded elastomers, provides maximum service life.

These versatile mounts are available in three types, each type featuring square, diamond or holder configurations to suit a variety of design requirements. The three types, Platform Mounts, Heavy-Duty Platform Mounts and Multiplane Mounts, offer a range in load ratings from 0.5 to 600 pounds.

Snubbing washers provide an interlocking system of metal parts which act to prevent damage from overload or excessive shock impact.

LORD Platform Mounts are easy to install and provide space efficiency. Typical applications include electronic equipment, business machines, medical equipment and small pumps, engines and gen sets.

PLATFORM MOUNTS

LORD VIBRATION, SHOCK & MOTION CONTROL **DELTA FLEX™.com**

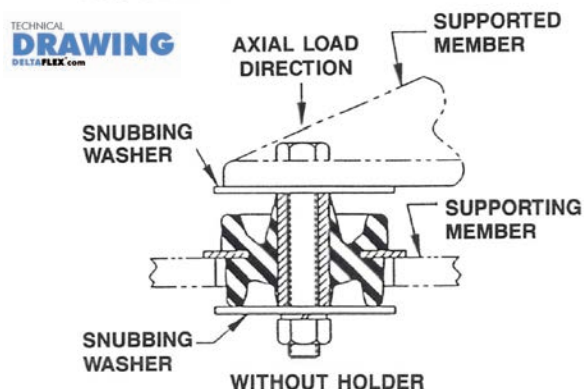
Features and Benefits

- Three types of mounts for different applications
- Square, diamond or holder configurations to suit a variety of design needs
- Load ratings from 0.5 to 500 pounds per mount
- Uniform stress distribution
- Easy to install

Need assistance with selecting the right mount for your application?

CALL US @ 800.657.0747
Ask for **Engineering**

283 SERIES PLAIN



Offering thousands of **standard** industrial rubber products and **innovative** “low” and “high” tech **custom** elastomeric products.

PLATFORM MOUNTS



PLATFORM MOUNT SERIES

LORD
AskUsHow™

SQUARE

DIAMOND

HOLDER



RUBBERPARTSCATALOG.COM



RUBBERPARTSCATALOG.COM



RUBBERPARTSCATALOG.COM

Table 1 – Specifications and Dimensions

Series Number	Part Number			Max. Axial Rated Load @ 1/16 in (1.58 mm) Deflection		Axial Spring Rates		Dimensions Under No Load					
	Square	Diamond	Holder					G ①		I		O ①	
				lb	N	lb/in	N/mm	in	mm	in	mm	in	mm
100 Aluminum	—	100PDL-A	—	0.5	2	8	1.4	0.30	7.6	0.41	10.4	0.78	19.8
	100PL-2	100PDL-2	100PHL-2	2	9	32	5.6	0.30	7.6	0.41	10.4	0.78	19.8
	100PL-4	100PDL-4	100PHL-4	4	18	64	11.2	0.30	7.6	0.41	10.4	0.78	19.8
	100PL-6	100PDL-6	100PHL-6	6	27	96	16.8	0.30	7.6	0.41	10.4	0.78	19.8
	100PL-10	—	—	10	44	160	28.0	0.39	9.9	0.62	15.7	0.88	22.4
150 (Steel)	—	150PD-2	—	2	9	32	5.6	0.40	10.2	0.62	15.7	1.12	28.4
	150P-6	150PD-6	—	6	27	96	16.8	0.40	10.2	0.62	15.7	1.12	28.4
	150P-8	150PD-8	150PH-8	8	36	128	22.4	0.40	10.2	0.62	15.7	1.12	28.4
	150P-10	150PD-10	150PH-10	10	44	160	28.0	0.40	10.2	0.62	15.7	1.12	28.4
	150P-12	150PD-12	150PH-12	12	53	192	33.6	0.40	10.2	0.62	15.7	1.12	28.4
	150P-18	150PD-18	—	18	80	288	50.4	0.40	10.2	0.62	15.7	1.12	28.4
	150P-24	150PD-24	—	24	107	384	67.2	0.56	14.2	0.88	22.4	1.28	32.5
	150P-30	150PD-30	150PH-30	30	133	480	84.1	0.68	17.3	1.12	28.4	1.41	35.8
200 (Steel)	—	200PD-15	—	15	67	240	42.0	0.59	15.0	1.00	25.4	1.56	39.6
	200P-25	200PD-25	—	25	111	400	70.1	0.59	15.0	1.00	25.4	1.56	39.6
	200P-35	—	200PH-35	35	156	560	98.1	0.59	15.0	1.00	25.4	1.56	39.6
	200P-45	200PD-45	200PH-45	45	200	720	126.1	0.59	15.0	1.00	25.4	1.56	39.6
200X (Steel)	200XP-60	200XPD-60	—	60	267	960	163.1	1.40	35.6	1.81	46.0	2.38	60.5
	200XP-90	200XPD-90	200XPH-90	90	400	1440	252.2	1.40	35.6	1.81	46.0	2.38	60.5

Materials: Metal parts are cold rolled steel or alodized aluminum alloy. Flexing elements are specially compounded natural rubber. Steel holders for holder-type mountings are plated. Unplated steel parts are coated with specially prepared rust preventative for protection during shipment or storage.

① Reference dimensions.

Tolerances: 0.xx = ± 0.03 in (± 0.762 mm)
0.xxx = ± 0.015 in (± 0.381 mm)

Mounting bolt holes are + 0.003 in (0.076 mm) and - 0.002 in (0.050 mm)

Table 3 – Snubbing Washer Part Numbers and Dimensions

Series Number	Part Number ②	Steel Washer					
		Dimensions					
		O.D.		I.D.		Thickness	
		in	mm	in	mm	in	mm
100	J-2049-1	0.88	22.4	0.17	4.3	0.03	0.8
150	J-2049-2	1.38	35.1	0.26	6.6	0.05	1.3
200	J-2049-3	1.88	35.1	0.39	9.9	0.06	1.5
200X	J-2049-3	1.88	35.1	0.39	9.9	0.06	1.5

② Steel washers are plated.



RUBBERPARTSCATALOG.COM

PLATFORM MOUNT SERIES
LORD VIBRATION SHOCK ANALYSIS™ & MOTION CONTROL **DELTA FLEX** .com

Offering thousands of **standard** industrial rubber products and **innovative “low”** and **“high”** tech **custom** elastomeric products.

Table 2 – Dimensions

Series Number	Dimensions Under No Load																											
	A ①		B		C		D + 0.008" - 0.002"		E		F		K		L		M		P		Q		R		S		U ①	
	in	mm	in	mm	in	mm	in	mm	in	mm	in	mm	in	mm	in	mm	in	mm	in	mm	in	mm	in	mm	in	mm	in	mm
100	1.00	25.4	1.25	31.8	1.000	25.4	0.166	4.2	0.141	3.6	0.032	0.8	1.69	42.9	1.375	34.9	0.141	3.6	0.025	0.6	1.414	35.9	0.62	15.7	1.66	42.2	0.15	3.8
150	1.50	38.1	1.75	44.5	1.375	34.9	0.257	6.5	0.166	4.2	0.050	1.3	2.38	60.5	1.938	49.2	0.196	5.0	0.032	0.8	1.945	49.4	0.88	22.4	2.32	58.9	0.18	4.6
200	2.00	50.8	2.25	57.2	1.750	44.5	0.391	9.9	0.196	5.0	0.062	1.6	3.00	76.2	2.500	63.5	0.257	6.5	0.032	0.8	2.475	62.9	1.12	28.4	2.98	75.2	0.22	5.6
200X	2.00	50.8	2.25	57.2	1.750	44.5	0.391	9.9	0.196	5.0	0.062	1.6	3.00	76.2	2.500	63.5	0.257	6.5	0.032	0.8	2.475	62.9	1.12	28.4	2.98	75.2	0.22	5.6

Customized designs and special elastomer compounds for specific problems are available. These may result in spring rates and dimensions other than shown.

Isolation Performance: Refer to Engineering Guide, Sample Problems section for a step by step method to calculate system natural frequencies and isolation efficiency.

① Reference dimensions.

For loads over 90 lb (400 N), use a Heavy-Duty Platform Mount. Radial spring rate is approximately two to three times the listed axial spring rate.

Figure 1 – Part Dimensions - Square

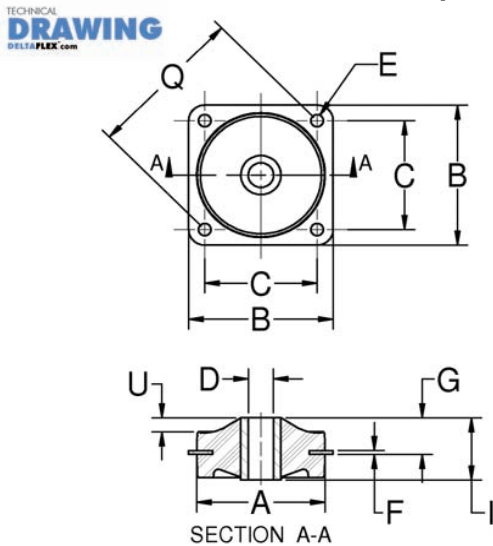


Figure 2 – Part Dimensions - Diamond

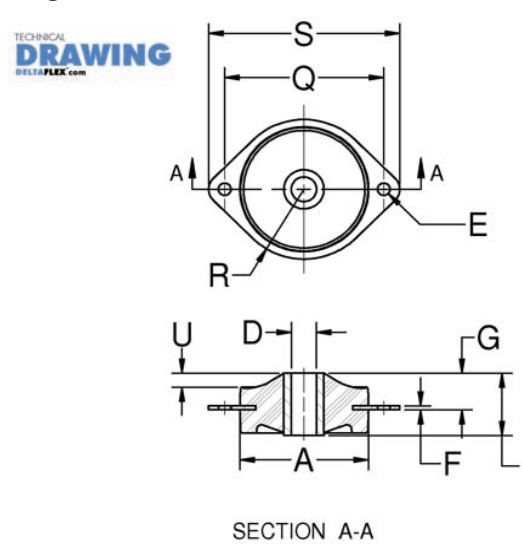


Figure 3 – Part Dimensions - Holder

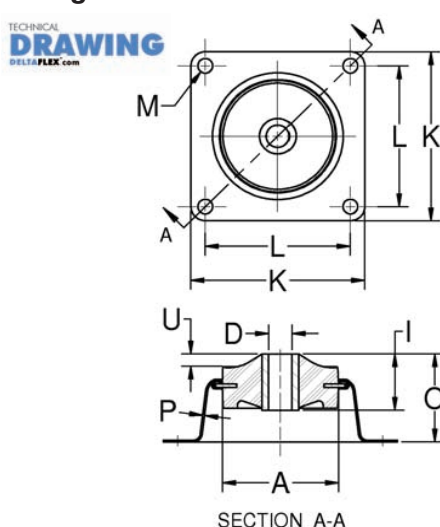
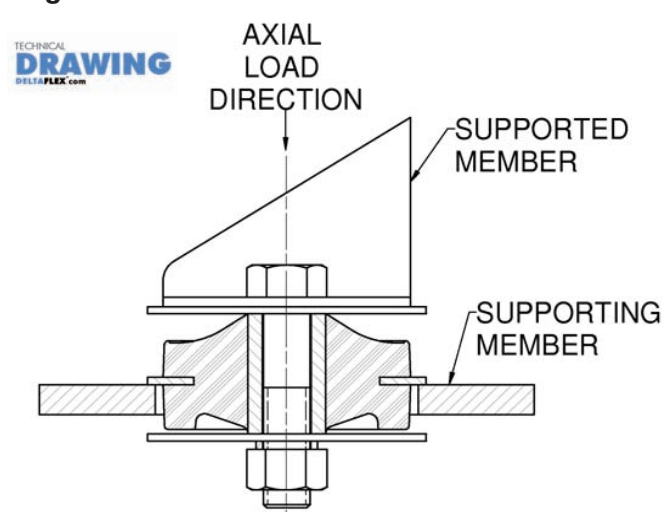


Figure 4 – Installation View



Offering thousands of **standard** industrial rubber products and **innovative "low" and "high" tech custom** elastomeric products.

PLATFORM MOUNTS

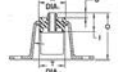
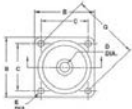


HEAVY-DUTY PLATFORM MOUNT SERIES

LORD
AskUsHow™

SQUARE

HOLDER



HEAVY-DUTY PLATFORM MOUNT SERIES

LORD VIBRATION, SHOCK & MOTION CONTROL

DELTA FLEX.com

HEAVY-DUTY PLATFORM MOUNT SERIES

LORD VIBRATION, SHOCK & MOTION CONTROL

DELTA FLEX.com

Need pricing or current inventory?

CALL US @ 800.657.0747
Ask for Quoting

Table 1 – Specifications and Dimensions

Series Number	Part Number		Max. Axial Rated Load		Axial Spring Rates		Dimensions Under No Load							
	Square	Holder					G ①		I		O ①		U ①	
			lb	N	lb/in	N/mm	in	mm	in	mm	in	mm	in	mm
	283P-120	—	120	534	480	84.1	0.88	22.4	1.25	31.8	3.12	79.2	0.50	12.7
	283P-155	283PH-155	155	689	620	108.6	0.88	22.4	1.25	31.8	3.12	79.2	0.50	12.7
283	283P-185	283PH-185	185	823	740	129.6	1.12	28.4	1.50	38.1	3.38	85.9	0.50	12.7
	283P-220	—	220	979	880	154.1	1.12	28.4	1.75	44.5	3.38	85.9	0.50	12.7
	283P-250	—	250	1112	1000	175.1	1.38	35.1	2.00	50.8	3.62	91.9	0.50	12.7
	283P-280	—	280	1245	1120	196.1	1.38	35.1	2.25	57.2	3.62	91.9	0.50	12.7
	283P-310	283PH-310	310	1379	1240	217.2	1.62	41.1	2.50	63.5	3.88	98.6	0.50	12.7
	283P-400	283PH-400	400	1779	1600	280.7	1.62	41.1	2.50	63.5	3.88	98.6	0.50	12.7
	283P-500	283PH-500	500	2224	2000	350.7	1.62	41.1	2.50	63.5	3.88	98.6	0.50	12.7

Materials: Metal parts are steel except holder which is ductile iron. Flexing elements are specially compounded natural rubber. Metal parts are coated with specially prepared rust preventative for protection during shipping or storage.

① Reference dimensions.

Tolerances: 0.xx = ± 0.03 in (± 0.762 mm)

0.xxx = ± 0.015 in (± 0.381 mm)

Bolt holes are + 0.005 in (0.127 mm) and - 0.002 in (0.050 mm)

Table 2 – Dimensions

Series Number	Dimensions Under No Load													
	A ①		B		C		D + 0.016" - 0.005"		E		F		K	
	in	mm	in	mm	in	mm	in	mm	in	mm	in	mm	in	mm
283	2.88	71.1	3.25	82.6	2.562	65.1	0.516	13.1	0.328	8.3	0.125	3.2	6.50	165.1

Customized designs and special elastomer compounds for specific problems are available. These may result in spring rates and dimensions other than shown.

Isolation Performance: Refer to Engineering Guide, Sample Problems section for a step by step method to calculate system natural frequencies and isolation efficiency.

① Reference dimensions.

For loads under 120 lb (534 N), use a Standard Platform Mount.

Table 3 – Snubbing Washer Part Numbers and Dimensions

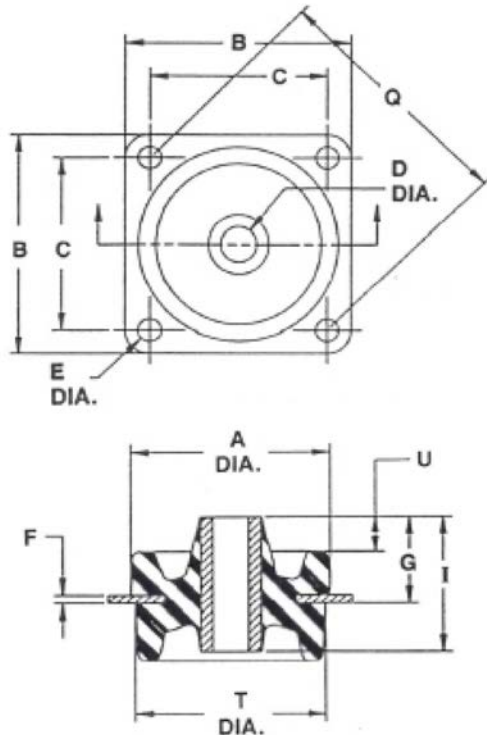
Series Number	Part Number	Washer					
		Dimensions					
		O.D.		I.D.		Thickness	
		in	mm	in	mm	in	mm
283	J-2049-4	2.88	73.2	0.52	13.2	0.125	3.2

Offering thousands of **standard** industrial rubber products and **innovative "low" and "high" tech custom** elastomeric products.

HEAVY-DUTY PLATFORM MOUNT SERIES

Figure 1 – Part Dimensions - Square

TECHNICAL
DRAWING
DELTAFLX.com



HEAVYDUTY PLATFORM MOUNT SERIES

RUBBERPARTSCATALOG.COM

FIGURE 1 **SQUARE**
PICTURE FOR REFERENCE ONLY

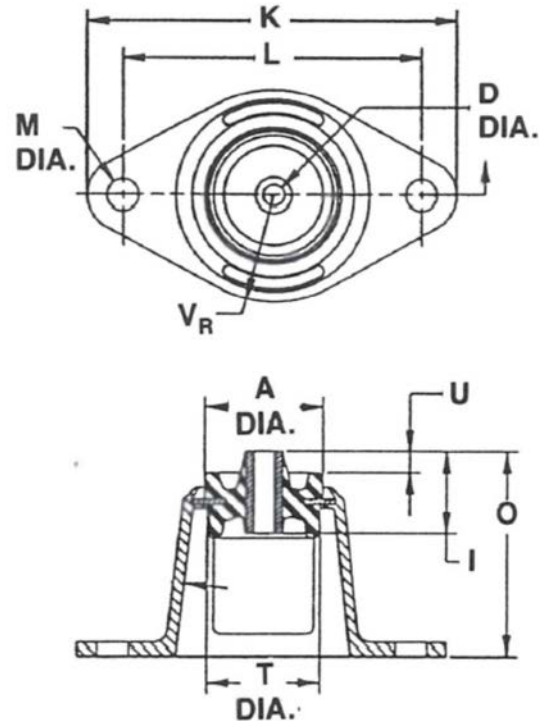
LORD
AskUsHow™

VIBRATION, SHOCK
& MOTION CONTROL

DELTAFLX.com

Figure 2 – Part Dimensions - Holder

TECHNICAL
DRAWING
DELTAFLX.com



HEAVYDUTY PLATFORM MOUNT SERIES

RUBBERPARTSCATALOG.COM

FIGURE 2 **HOLDER**
PICTURE FOR REFERENCE ONLY

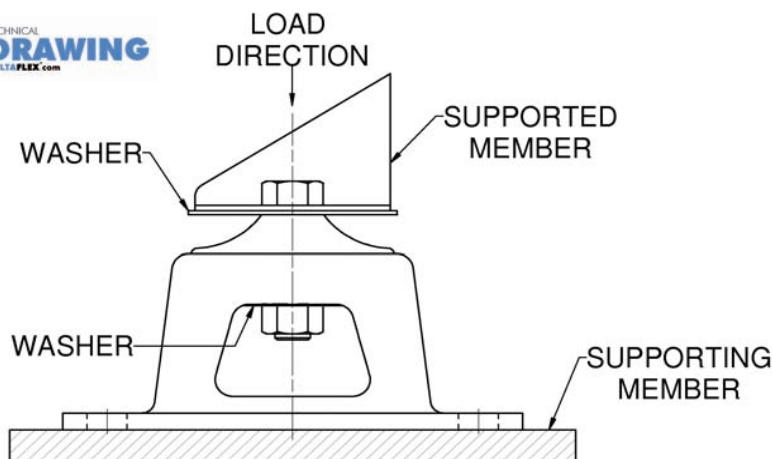
LORD
AskUsHow™

VIBRATION, SHOCK
& MOTION CONTROL

DELTAFLX.com

Figure 3 – Installation View

TECHNICAL
DRAWING
DELTAFLX.com



ENGINEERING ASSISTANCE

Frequently vibration isolation problems require a system engineering analysis. DeltaFlex has the computer capability, as well as specialized programs, for analyzing engine/transmission combinations. The output from these analyses is a mounting proposal which optimizes performance over the complete range of operating speeds. This service is available to you upon request. If you require this type of engineering assistance please call 800.657.0747 we will be glad to assist you.

Offering thousands of **standard** industrial rubber products and **innovative "low"** and **"high"** tech **custom** elastomeric products.

DELTAFLX.com

Phone 262.632.2345

Fax 262.632.0271

sales@deltaflex.com

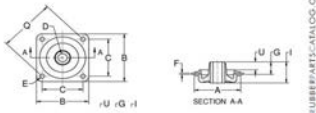
PLATFORM MOUNTS

MULTIPLANE MOUNT SERIES



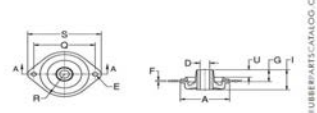
LORD
AskUsHow™

SQUARE



MULTI-PLANE PLATFORM MOUNT SERIES

DIAMOND



MULTI-PLANE PLATFORM MOUNT SERIES

HOLDER



MULTI-PLANE PLATFORM MOUNT SERIES

Table 1 – Specifications and Dimensions

Series Number	Part Number			Max. Axial Rated Load @ 3/16 in (4.80 mm) Deflection		Axial Spring Rates		Dimensions Under No Load					
	Square	Diamond	Holder					A ①		B		C	
				lb	N	lb/in	N/mm	in	mm	in	mm	in	mm
106 Aluminum	—	106PDL-1	106PHL-1	1	4	5	.9	1.00	25.4	1.25	31.8	1.000	25.4
	—	106PDL-2	106PHL-2	2	9	11	1.9	1.00	25.4	1.25	31.8	1.000	25.4
	—	106PDL-3	106PHL-3	3	13	16	2.8	1.00	25.4	1.25	31.8	1.000	25.4
	—	106PDL-4	106PHL-4	4	18	21	3.7	1.00	25.4	1.25	31.8	1.000	25.4
	106PL-6	106PDL-6	106PHL-6	6	27	32	5.6	1.00	25.4	1.25	31.8	1.000	25.4
156 Steel	156P-6	156PD-6	—	6	27	32	5.6	1.50	38.1	1.75	44.5	1.375	34.9
	156P-9	156PD-9	156PH-9	9	40	48	8.4	1.50	38.1	1.75	44.5	1.375	34.9
	156P-13	156PD-13	—	13	58	69	12.1	1.50	38.1	1.75	44.5	1.375	34.9
	156P-16	156PD-16	156PH-16	16	71	85	14.9	1.50	38.1	1.75	44.5	1.375	34.9
206 Steel	206P-20	206PD-20	206PH-20	20	89	106	18.6	2.00	50.8	2.25	57.2	1.750	44.5
	206P-30	206PD-30	206PH-30	30	133	160	28.0	2.00	50.8	2.25	57.2	1.750	44.5
	206P-45	206PD-45	206PH-45	45	200	240	42.0	2.00	50.8	2.25	57.2	1.750	44.5

Materials: Metal parts are cold rolled steel or alodized aluminum alloy. Flexing elements are specially compounded natural rubber. Steel holder for holder-type mountings are plated. Unplated steel parts are coated with specially prepared rust preventative for protection during shipment or storage.

① Reference dimensions.

Tolerances: 0.xx = ± 0.03 in (± 0.762 mm)

0.xxx = ± 0.015 in (± 0.381 mm)

Mounting bolt holes are + 0.003 in (0.076 mm) and - 0.002 in (0.050 mm)

Table 2 – Dimensions

Series Number	Dimensions Under No Load																											
	D + 0.008" - 0.002"		E		F		G ①		I		K		L		M		O ①		P		Q		R		S		U ①	
	in	mm	in	mm	in	mm	in	mm	in	mm	in	mm	in	mm	in	mm	in	mm	in	mm	in	mm	in	mm	in	mm	in	mm
106	0.166	4.2	0.141	3.6	0.032	0.8	0.53	13.5	0.84	21.3	1.69	42.9	1.375	34.9	0.141	3.6	1.58	40.1	0.025	0.6	1.414	35.9	0.62	15.7	1.66	42.2	0.38	9.7
156	0.257	6.5	0.166	4.2	0.050	1.3	0.60	15.2	0.97	24.6	2.38	60.5	1.937	49.2	0.196	5.0	1.81	46.0	0.032	0.8	1.945	49.4	0.88	22.4	2.32	58.9	0.42	10.7
206	0.391	9.9	0.196	5.0	0.062	1.6	0.59	14.9	1.00	25.4	3.00	76.2	2.500	63.5	0.257	6.5	1.98	50.3	0.032	0.8	2.475	62.9	1.12	28.4	2.98	75.7	0.34	8.6

Customized designs and special elastomer compounds for specific problems are available. These may result in spring rates and dimensions other than shown.

Isolation Performance: Refer to Engineering Guide, Sample Problems section for a step by step method to calculate system natural frequencies and isolation efficiency.

① Reference dimensions.

Offering thousands of **standard** industrial rubber products and **innovative "low" and "high" tech custom** elastomeric products.

Figure 1 – Part Dimensions - Square

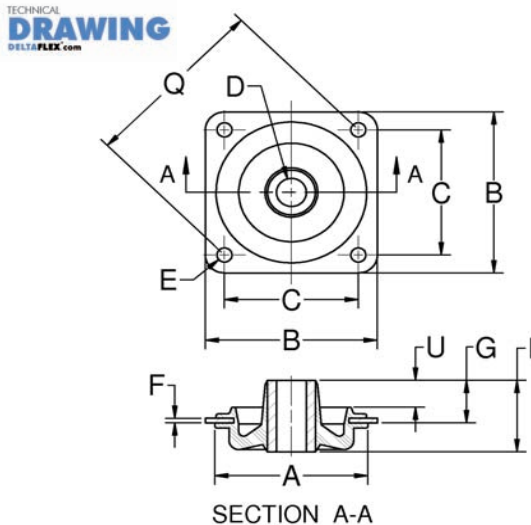


Figure 2 – Part Dimensions - Diamond

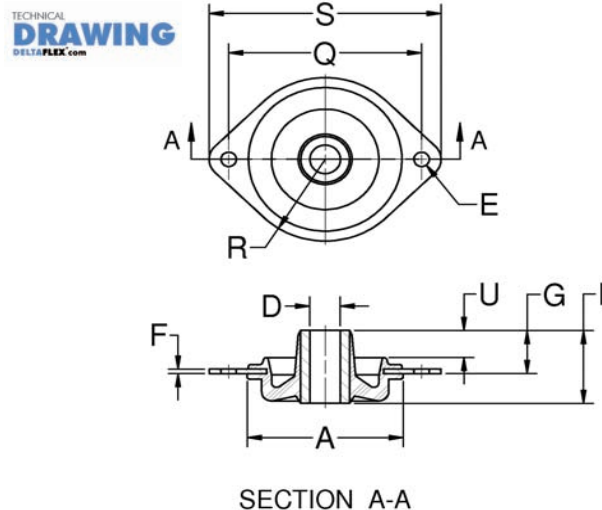


Figure 3 – Part Dimensions - Holder

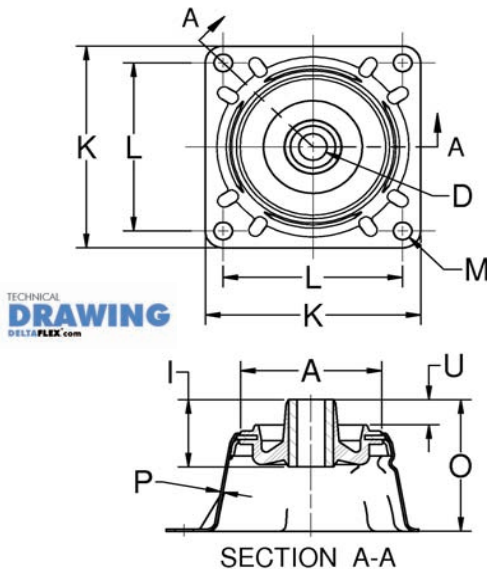
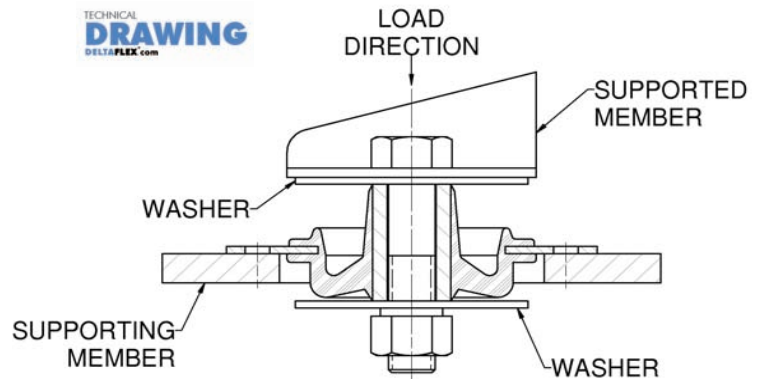


Figure 4 – Installation View



Need pricing or current inventory?

CALL US @ 800.657.0747
Ask for **Quoting**

Table 3 – Snubbing Washer Part Numbers and Dimensions

Series Number	Part Number ②	Steel Washer					
		Dimensions					
		O.D. ± 0.016"		I.D. + 0.016" - 0.000"		Thickness ± 0.010"	
		in	mm	in	mm	in	mm
106	J-2049-1	0.88	22.4	0.17	4.3	0.032	0.8
156	J-2049-2	1.38	35.1	0.26	6.6	0.050	1.3
206	J-2049-3	1.88	47.8	0.39	9.9	0.060	1.5

② Steel washers are plated.

Offering thousands of **standard** industrial rubber products and **innovative** "low" and "high" tech **custom** elastomeric products.

PLATFORM MOUNTS



Need assistance with selecting the right mount for your application?

CALL US @ 800.657.0747 Ask for Engineering

LORD
AskUsHow™

NOTES:

This image shows a full page of blank, white paper with horizontal blue ruling lines. The lines are evenly spaced and run across the width of the page, typical of notebook or legal stationery. There are no margins, text, or other markings present.

SKETCH:

Offering thousands of **standard** industrial rubber products and **innovative** "low" and "high" tech **custom** elastomeric products.

THE FUTURE OF CITY PLANNING

APPLICATION SELECTION GUIDE

RUBBER PARTS CATALOG®
www.rubberparts.com

VIBRATION, SHOCK & MOTION CONTROL

RUBBER PARTS CATALOG®.com

Manufacturing

Distribution

Vibration Mounts

Grommets

Bumpers

Gaskets

Bushings

Stock & Custom Parts

Molded & Extruded

Military Grommets

End Caps

Adhesive Backed Bumpers

Lab Stoppers

Tips & Caps

Cord Stock

Suction Cups

Rubber Washer

O-Rings

Sheet, Sponge & Matting

Custom Fabrication

Blanket Service

Inventory Management & Releases

DELTAFLEX™.com



Headquarters
1515 16th Street
Racine, WI 53403

Phone 262.632.2345
Customer Service 800.657.0747
Fax 262.632.0271

A parts listing in this catalog does not guarantee its availability. To download the most current version to go to RubberPartsCatalog.com

Values stated herein represent typical values as not all tests are run on each lot of material produced. For formalized product specifications or specific products end uses, contact **Engineering** @ 800.657.0747.

Information provided herein is based upon tests believed to be reliable. In as much as DELTAFLEX and/or LORD Corporation has no control over the manner in which others may use this information, it does not guarantee the results to be obtained. In addition, DELTAFLEX and/or LORD Corporation does not guarantee the performance of the product or the results obtained from the use of the product or this information where the product has been repacked by any third party, including but not limited to any product end-user. Nor does the company make any express or implied warranty of merchantability or fitness for a particular purpose concerning the effects or results of such use.

Flex-Bolt and "Ask Us How" are trademarks of LORD corporation or one of its subsidiaries
DeltaFlex, the df triangle, RubberPartsCatalog and its logos are registered trademarks of Delta Flexible Products, Inc.